

## Penguin Prepared Public Plan (July 2021 update)



Dear students, faculty, and staff,

Last year, together, we navigated unprecedented challenges. To all students and members of our staff and faculty who experienced loss, anxiety, and isolation due to the pandemic, I wish to extend my support and empathy. I am also pleased to share my thanks. As a result of your conscientious attention to the protocols outlined in our Penguin Prepared health and safety plan, our campus community remained safe, connected, and informed.

We have revised our Penguin Prepared plan for the 2021-2022 academic year based on the latest federal, state, and county public health expertise. While circumstances related to COVID-19 continue to improve in Marin County as more community members are vaccinated and rates of infection decline, we must remain vigilant. Dominican's Pandemic Response Team will continue to work closely with Marin County Public Health throughout the year, and we are prepared to implement contingency plans if the institution must adjust to changing conditions.

Following the protocols in this document, I am confident we will have a rich on-campus experience when students, faculty, and staff return to campus this fall. Thank you for your enduring commitment to our collective health and safety. I look forward to welcoming you back very soon. It will be such a joy to be together.

Warmly,

A handwritten signature in black ink, appearing to read "N. Pitchford". The signature is fluid and cursive, with a large loop at the end.

Nicola Pitchford  
President



## STATEMENT OF PURPOSE

The following document has been prepared with the intention of sharing Dominican's safety plan with the campus community. Informed by guidance from the Centers for Disease Control and Prevention (CDC), California Department of Public Health (CDPH), Marin County Public Health, among many others, this comprehensive plan includes discussion of issues critical to the safety and well-being of the Dominican community. This document is based on the best public health data at the time and will be updated as new guidance and practices emerge.

Employees seeking more specific information can find it on the Dominican intranet under the Human Resources tab.

## HEALTH AND SAFETY

### Pandemic Response Team

Dominican has created a Pandemic Response Team (PRT) in response to COVID-19 to assist with campus protocol, procedures, and preparation. The team is a subset of the Dominican Risk Team and serves as the key group of decision makers responsible for addressing emerging issues related to the health and safety of the campus. PRT members are on call 24/7 for any campus issues related to COVID-19. The PRT is comprised of:

- VP for Advancement & Public Affairs, Marly Norris (COVID Lead)
- VP of Student Affairs & Dean of Students, Dr. Paul Raccanello
- VP for Academic Affairs & Dean of Faculty, Dr. Mojgan Behmand
- Director of Human Resources, Jesse Andrews
- Executive Director of Communications & Media Relations, Sarah Gardner
- Special Assistant to the President, Jennifer Krengel
- Associate Dean of Students, Lorisa Lorenzo
- Manager of Events & Conference Services, Vickie Hall

Questions for the Pandemic Response team can be sent via email to:

[penguinprepared@dominican.edu](mailto:penguinprepared@dominican.edu)

## KEY INFORMATION FOR STUDENTS

All residence halls, dining hall, classrooms and shared spaces will return to normal capacity in the fall semester. Physical distancing will not be required.

However, CDC guidance recommends wearing a mask in shared spaces if vaccination status of other individuals is unknown. This is to protect those who are unable to be vaccinated and helps those individuals not have to answer questions about private conditions or beliefs that may be preventing vaccination.

Students with questions or concerns should contact the Pandemic Response Team at

[penguinprepared@dominican.edu](mailto:penguinprepared@dominican.edu)

If you have questions about the health issues connected with COVID-19, contact the Student Health Center at [studenthealthcenter@dominican.edu](mailto:studenthealthcenter@dominican.edu).

## Training (Students, Faculty, and Staff)

Updated mandatory Health and Safety training will be issued for all faculty, staff, and students. Human Resources will send out training for faculty and staff; the Student Life Office will contact students regarding their training.

## HEALTHY PRACTICE ON CAMPUS

### Vaccination

**STUDENTS:** Vaccination will be required for all students to return to campus in fall, with exemptions made for medical or religious reasons. Please review the [Immunization Policy & Vaccine Requirement](#) document for additional information, including the Student Vaccine Requirement Exemption Form. For specific questions, please contact the Student Health Center at [studenthealthcenter@dominican.edu](mailto:studenthealthcenter@dominican.edu).

**FACULTY/STAFF:** We strongly encourage vaccination for faculty and staff. To ensure the overall safety of the community. Employees and students not receiving the vaccine may be required to participate in daily health attestations and surveillance testing once or twice a week when classes resume. This process is still being developed with the relevant stakeholders and we will provide additional information when we have it.

## Masks

The University is still reviewing the issue of masks being required indoors, and will use the most updated guidance from the CDC, CA Dept of Public Health, and Marin County Health & Human Services to make a final determination for fall. On July 16, 2021, Marin County Public Health joined other Bay Area counties in recommending face coverings for all individuals in indoor public settings, vaccinated or unvaccinated. This is especially important for individuals with medically vulnerable or unvaccinated household members.

Any indoor gatherings of multiple households, as well as those offices that are outward/student facing are asked to wear masks on campus until further notice. However, if employees work in an office space with the same individuals on a regular basis and are NOT outward facing (i.e. do not have large numbers of students, faculty or staff visiting your office space) and all occupants are fully vaccinated, it may be acceptable to be without a mask within that office space. **Masks are not required outdoors.**

At this time, all employees should carry a mask or have one available in their workspace, in case of interactions with individuals with uncertain vaccination status. If for some reason a community member arrives on campus without a mask and one is needed, N-95 masks are available from the Student Health Center.

For more specifics on masks: [Centers for Disease Control and Prevention \(CDC\)](https://www.cdc.gov/coronavirus/2019-ncov/mask-ventilation/index.html)

## Testing

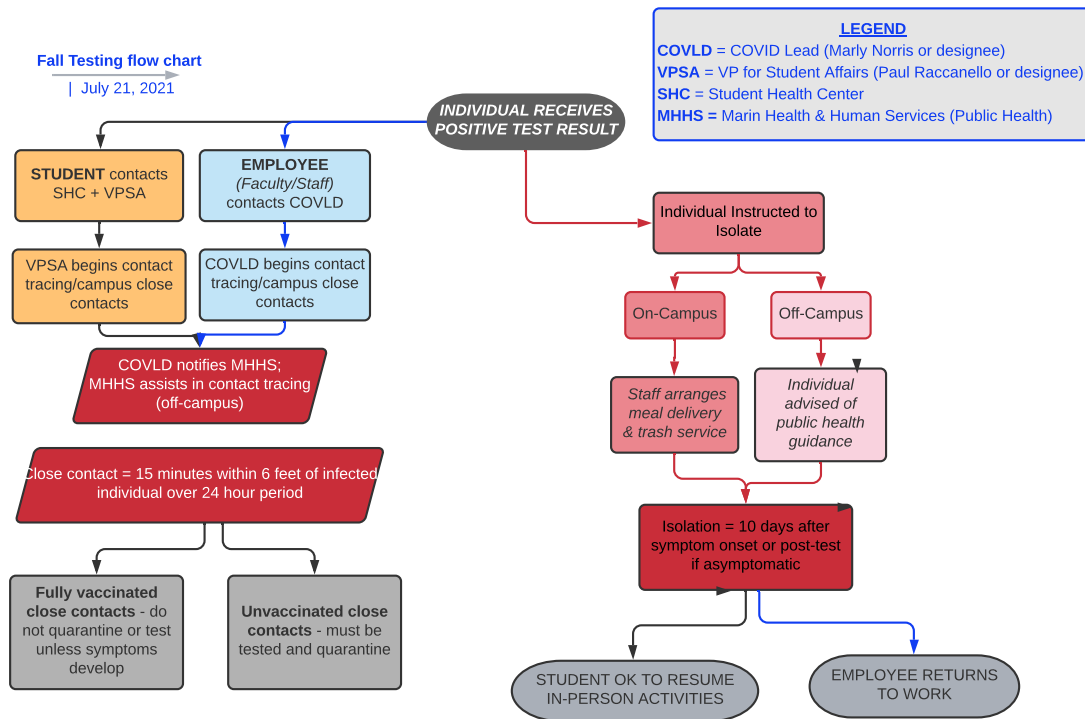
Individuals who are fully vaccinated (as defined by the CDC) do not need to undergo routine COVID-19 screening testing as a condition of employment. If a fully vaccinated person is exposed to someone with COVID-19 they do not need to be tested as a condition of employment unless they are experiencing COVID-19 symptoms. Any person who experiences COVID-19 symptoms should work with their treating health care provider and will need to provide a negative COVID-19 test before returning to the workplace. See the CDC's [Interim Public Health Recommendations for Fully Vaccinated People](https://www.cdc.gov/media/releases/2021/s0716-covid-vaccines.html) for more information.

We anticipate that unvaccinated individuals may have to participate in screening testing once or twice each week when the fall semester begins. Screening testing is intended to identify infected people who are asymptomatic and do not have known, suspected, or reported exposure to COVID-19. Screening helps to identify unknown cases so that measures can be taken to prevent further transmission. Unvaccinated individuals may also be required to quarantine after exposure to someone with COVID-19, whether the exposure is in the workplace or not.

It has not yet been determined if Dominican will provide testing; individuals may have to seek out and submit testing results from an outside vendor. We will update you on this as soon as we have more information.

## In the event of a positive case on campus:

Please see the chart below for details of notification in the event of a positive test being reported:



Questions may be directed to [penguinprepared@dominican.edu](mailto:penguinprepared@dominican.edu)

## Health Center and University Counseling Services

The Student Health Center (SHC), located on the first floor of Bertrand Hall, room 100, is available to all students free of charge Monday through Friday by appointment. Call (415) 485-3208 for quickest response, or email [studenthealthcenter@dominican.edu](mailto:studenthealthcenter@dominican.edu).

Students will be screened for symptoms of COVID-19 and evaluated for severity of illness prior to being seen in the SHC. For any student with COVID-like symptoms, they will be instructed to remain in their assigned residence unit or at home until otherwise instructed by a healthcare provider. If exhibiting symptoms, they are instructed to contact their primary care provider or the Student Health Center at the onset of symptoms and prior to seeking medical care so appropriate precautions can be taken. Additionally, students with any symptoms of COVID-19, or those who have been deemed a close contact of someone who has tested COVID-19 positive (and is still in their quarantine period), should not participate in our regular campus surveillance testing. However, individuals will be counseled regarding other available local testing options.

Students seeking counseling (mental health and wellness) can request free telehealth counseling appointments with University Counseling Services (UCS). To access UCS, call the Student Health Center at (415) 485-3208, leave a message on the UCS voicemail line at (415) 485-3258 or go online or go to the UCS website to request an appointment. For urgent concerns, same day appointments are available by contacting the Student Health Center.





## Facilities Cleaning and Ventilation

As part of the Penguin Prepared Plan drafted last year, ventilation systems have been assessed and are in compliance with current state guidelines, which includes updating HVAC filters.

We are encouraging staff to leave windows and doors open whenever possible; in shared spaces that do not have windows to help with ventilation, we are offering air purifiers, available through Facilities. Custodial teams will clean common spaces and frequently touched surfaces based on CDC guidelines.

## International Students

Like all students, our international students must be vaccinated. If they were vaccinated in their own country, the vaccine must be on the [World Health Organization-approved vaccine list](#). If the student completed full series (multiple dose). If full series was not completed, Marin County Public Health recommends they restart with either the single dose Johnson & Johnson vaccine, or two- dose/Moderna or Pfizer.

Regarding quarantine after arrival, the CDC no longer requires 14 days of quarantine, but does recommend testing 3-5 days after arrival. We are not sure if we will be offering testing on campus this fall, but testing will still be available for free through [LHI](#) tentatively through October.

## External Events

External events will resume on campus, with spaces at normal capacity. For further documentation on rules, procedures, and guidelines, please visit the [Events and Conference Services webpage](#), under the heading “Dominican Events Protocol” on the main page.

## Public Presence on Campus Grounds

Masks are no longer required outdoors, however ALL BUILDINGS CONTINUE TO BE CLOSED TO THE GENERAL PUBLIC UNTIL FURTHER NOTICE.

## ACADEMICS

All classes for the fall semester are scheduled to resume in-person on campus. Mask policy for the classroom has not yet been determined, and will be based on the most up-to-date guidance from the CDC.

## PERSONNEL

### Administrative Offices

All employees have been asked to confirm an in-office schedule beginning August 1, 2021, with their supervisor; that schedule must be approved by the relevant Vice President. Employees who have been approved for a hybrid schedule must fill out a Telework request.

### Attestation

All faculty and staff will be asked to attest to their vaccination status at the start of the fall semester. Individuals who are unvaccinated will be required to fill out a daily health attestation, and may be required to undergo surveillance testing on a weekly basis.

### Human Resources

More information for employees can be found on Dominican's intranet.

## ATHLETICS

### Competition

All practice and competition will resume; guidelines are evolving at this time. Athletics will continue to follow University, PacWest, MCLA, NCAA, State and County guidelines.

### Facilities Availability

All Conlan Center indoor facilities such as the gymnasium, weight room, and pool will reopen for the fall semester. Rec Sports will also resume its offerings of organized classes and activities. Conlan is reopening for community current members (who must attest to vaccination on their first visit) on July 10, 2021.

