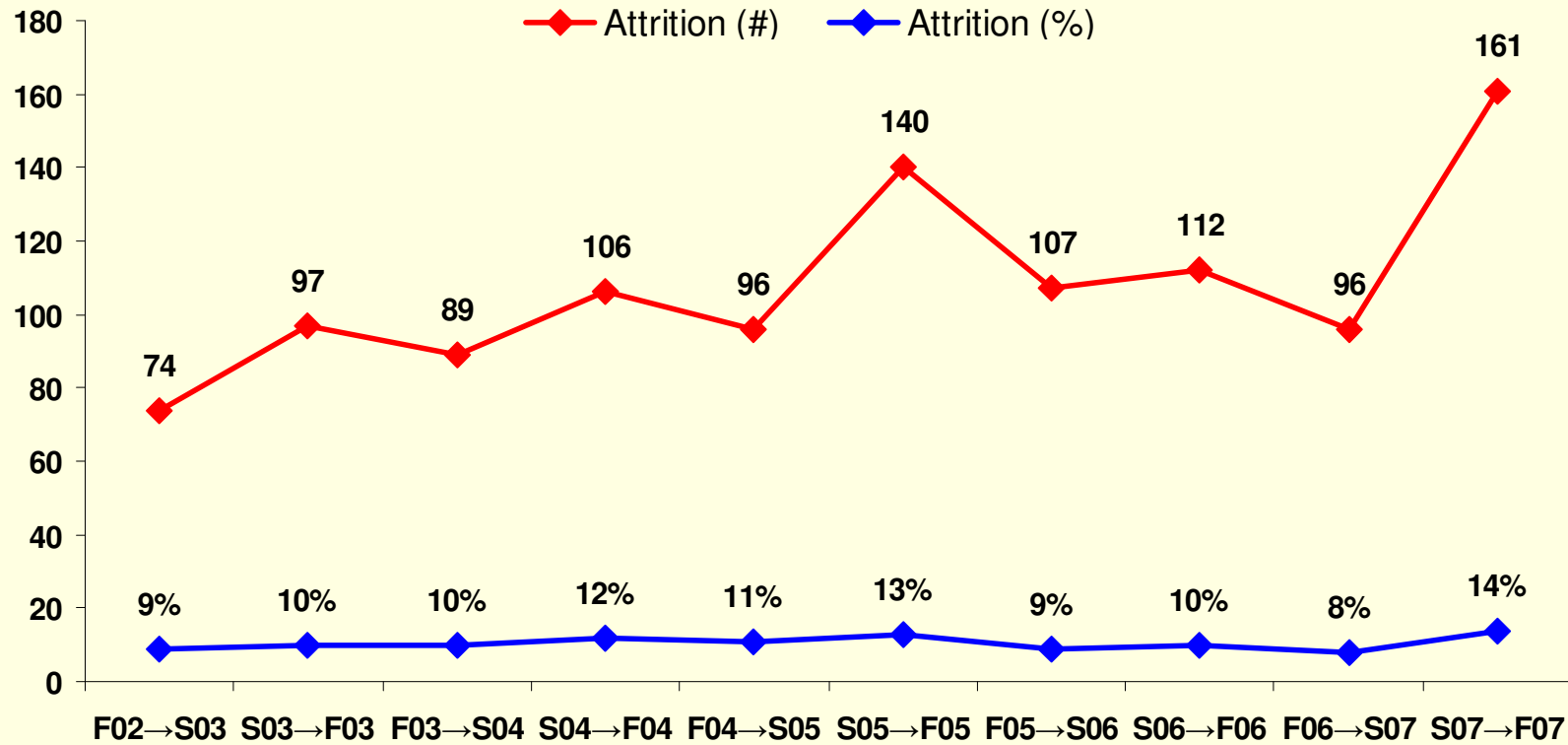


5-Year Undergraduate Day Attrition Analysis 2002 - 2007

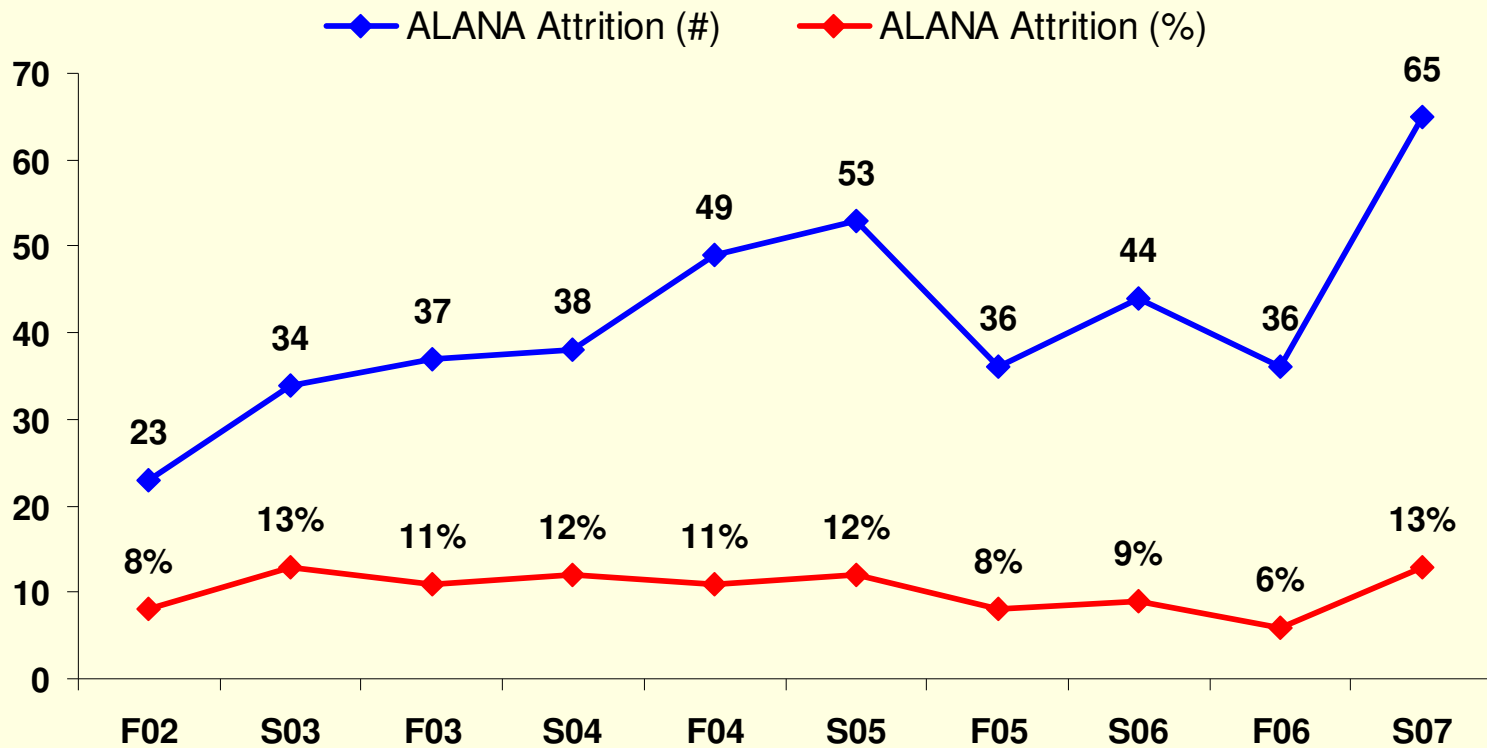
Undergraduate Day 5-Year Attrition Trend



5-Year Undergraduate Day Attrition Analysis

2002 - 2007

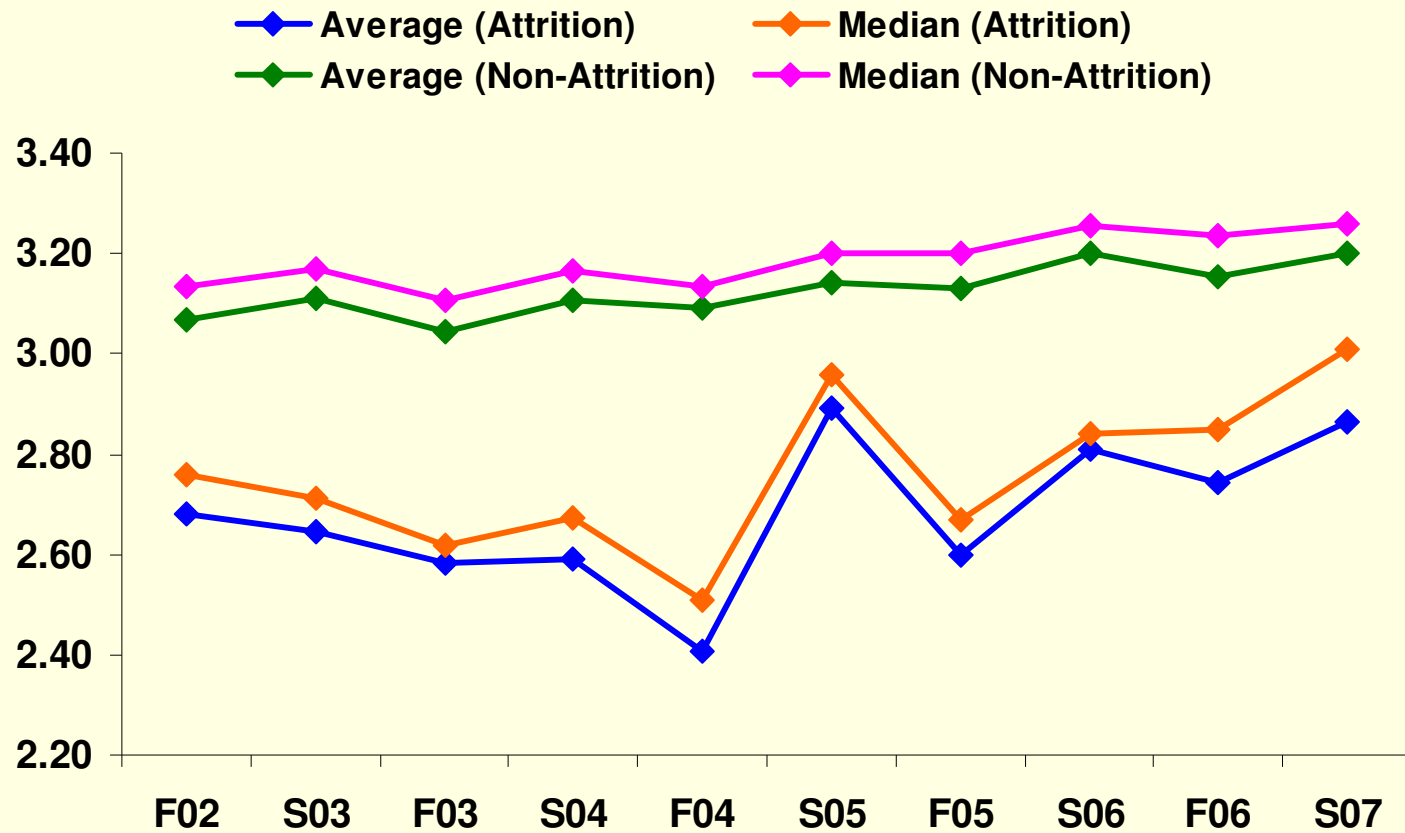
5-Year Undergraduate Day ALANA Attrition Trend



5-Year Undergraduate Day Attrition Analysis

2002 - 2007

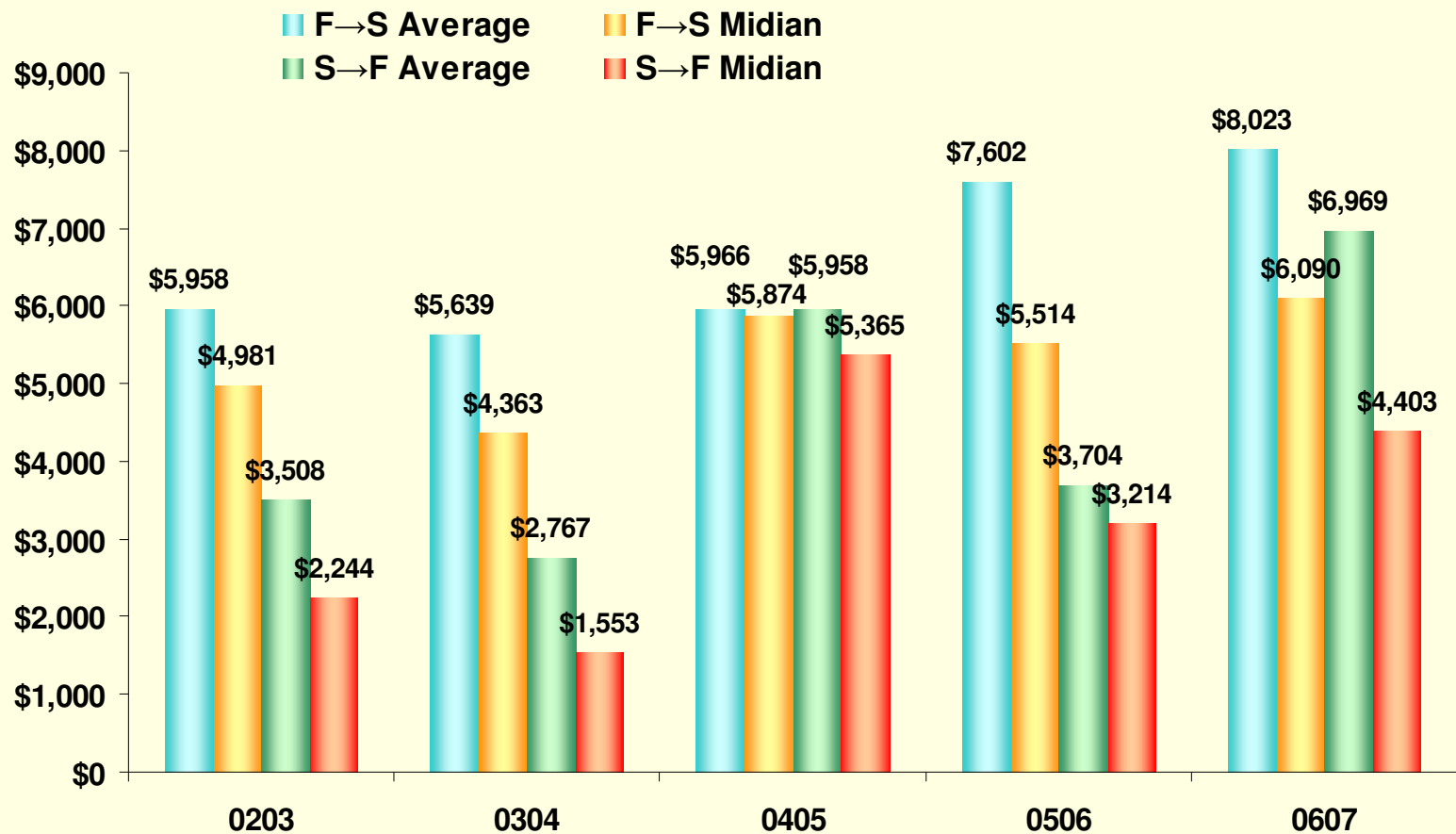
Cumulative GPA Comparison



5-Year Undergraduate Day Attrition Analysis

2002 - 2007

Average Financial Unpaid Balance at Attrition

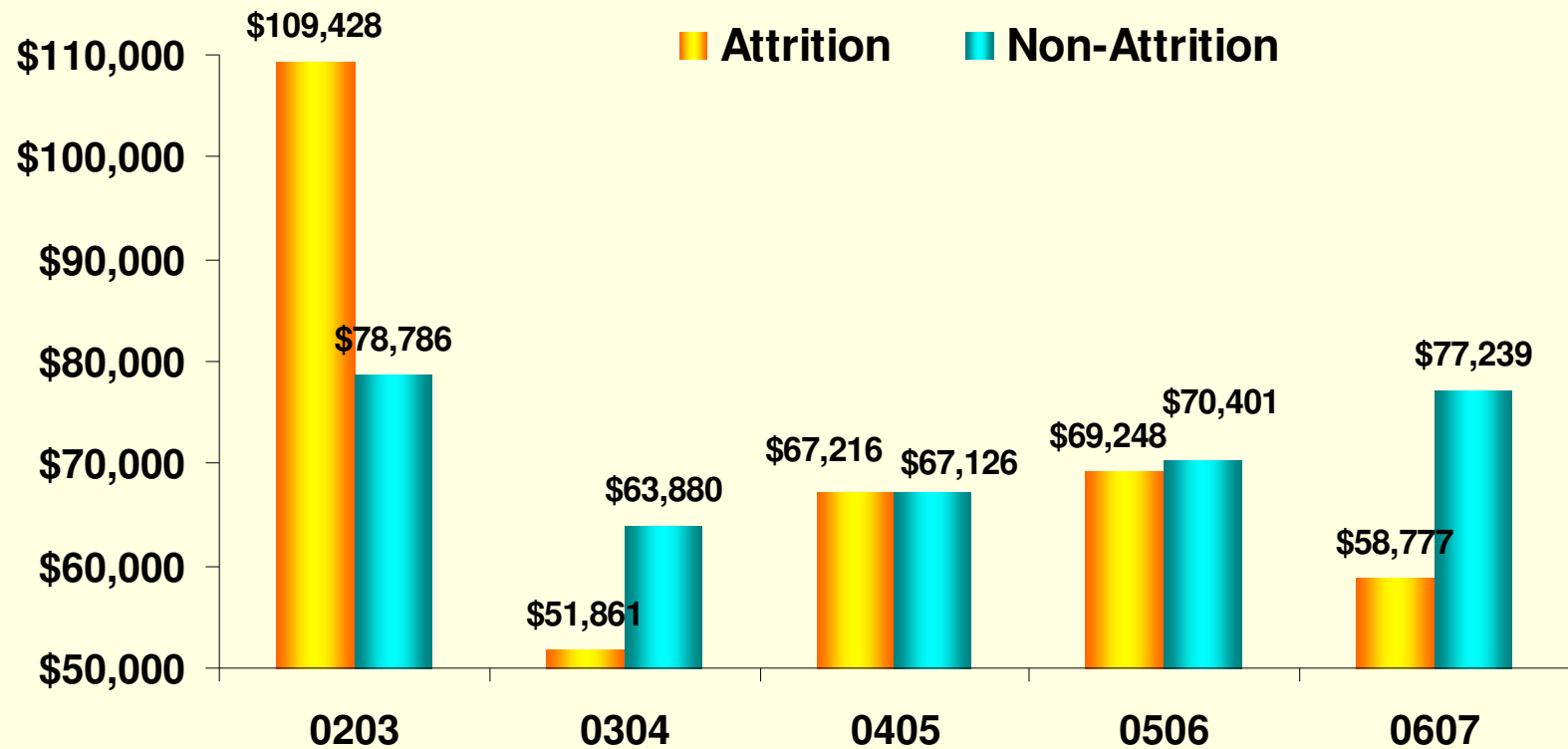


5-Year Undergraduate Day Attrition Analysis

2002 - 2007

Average Family Income Comparison

FAFSA Filers

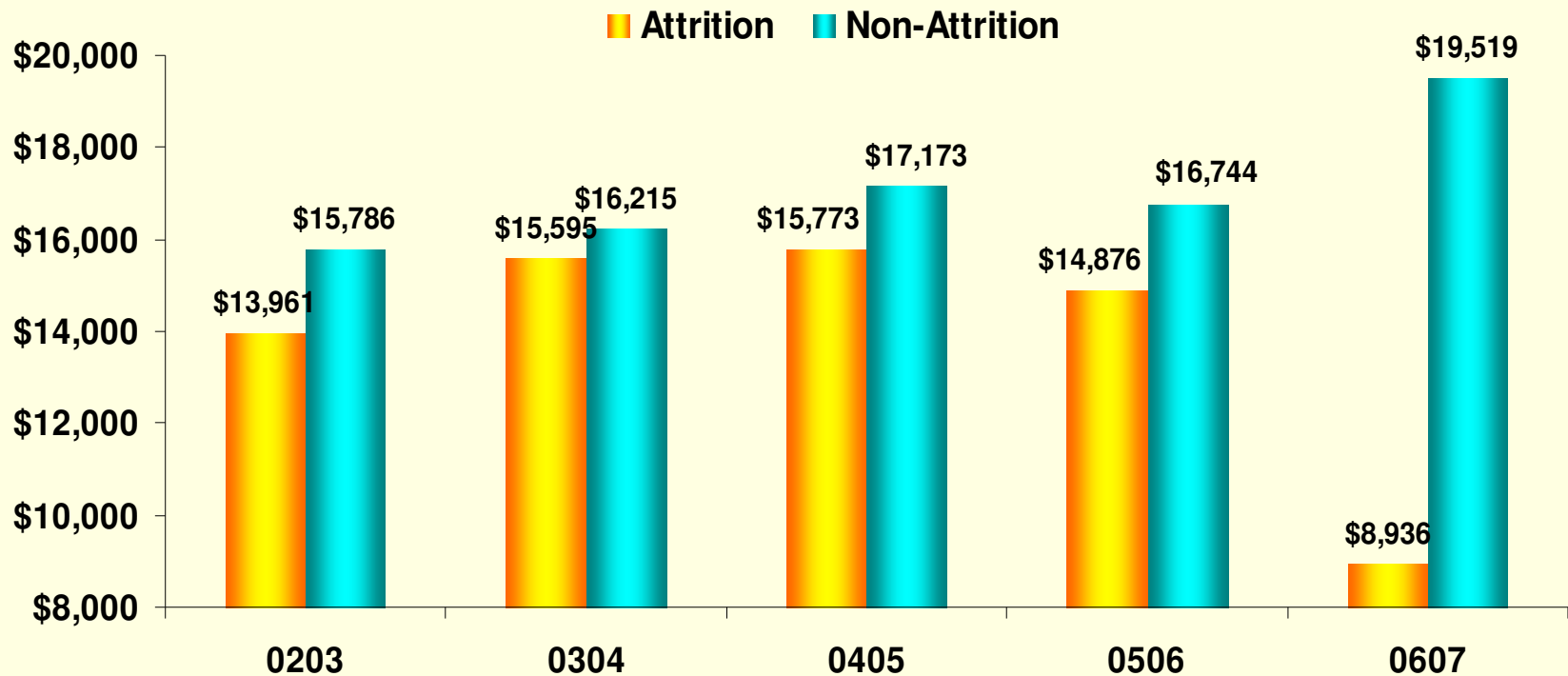


5-Year Undergraduate Day Attrition Analysis

2002 - 2007

Average Aid Comparison

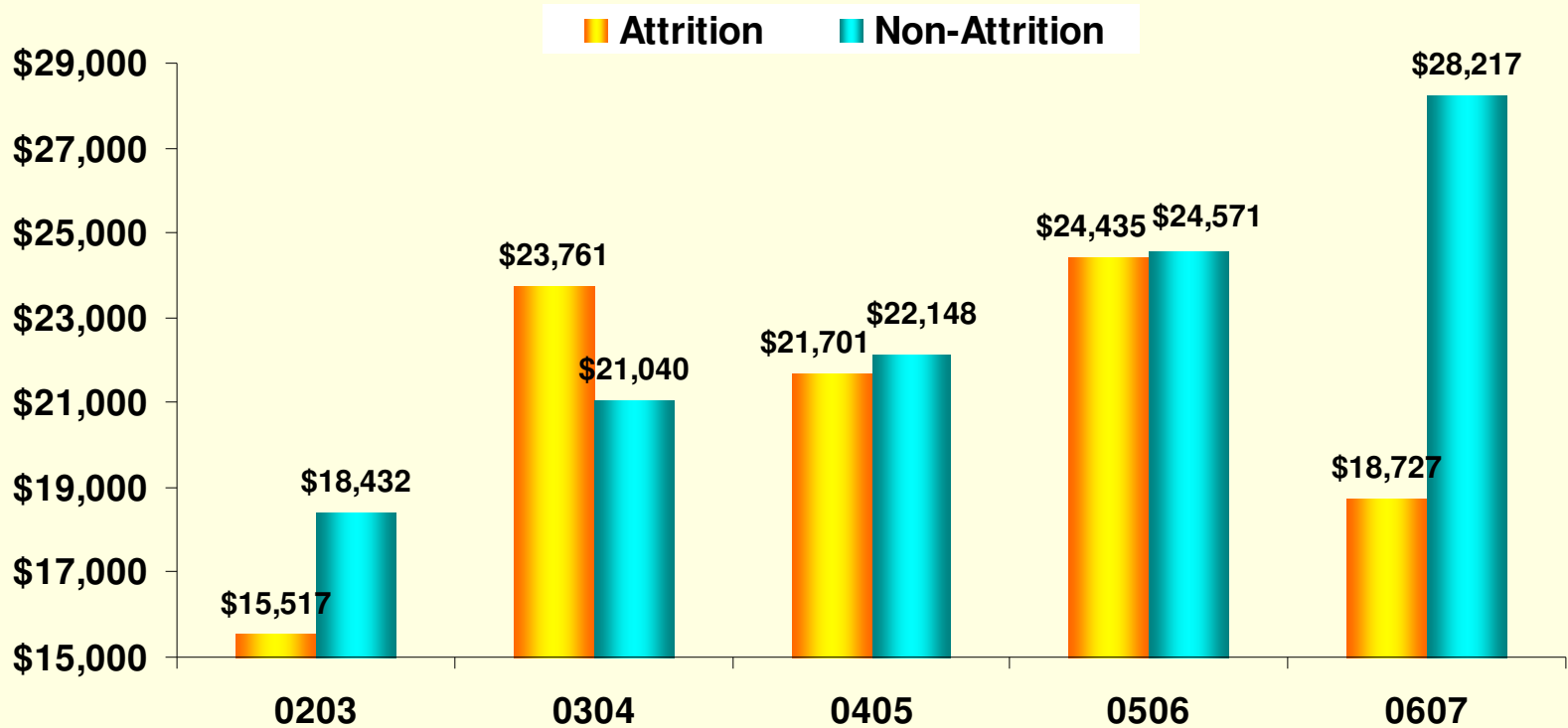
excluding Plus & Private



5-Year Undergraduate Day Attrition Analysis

2002 - 2007

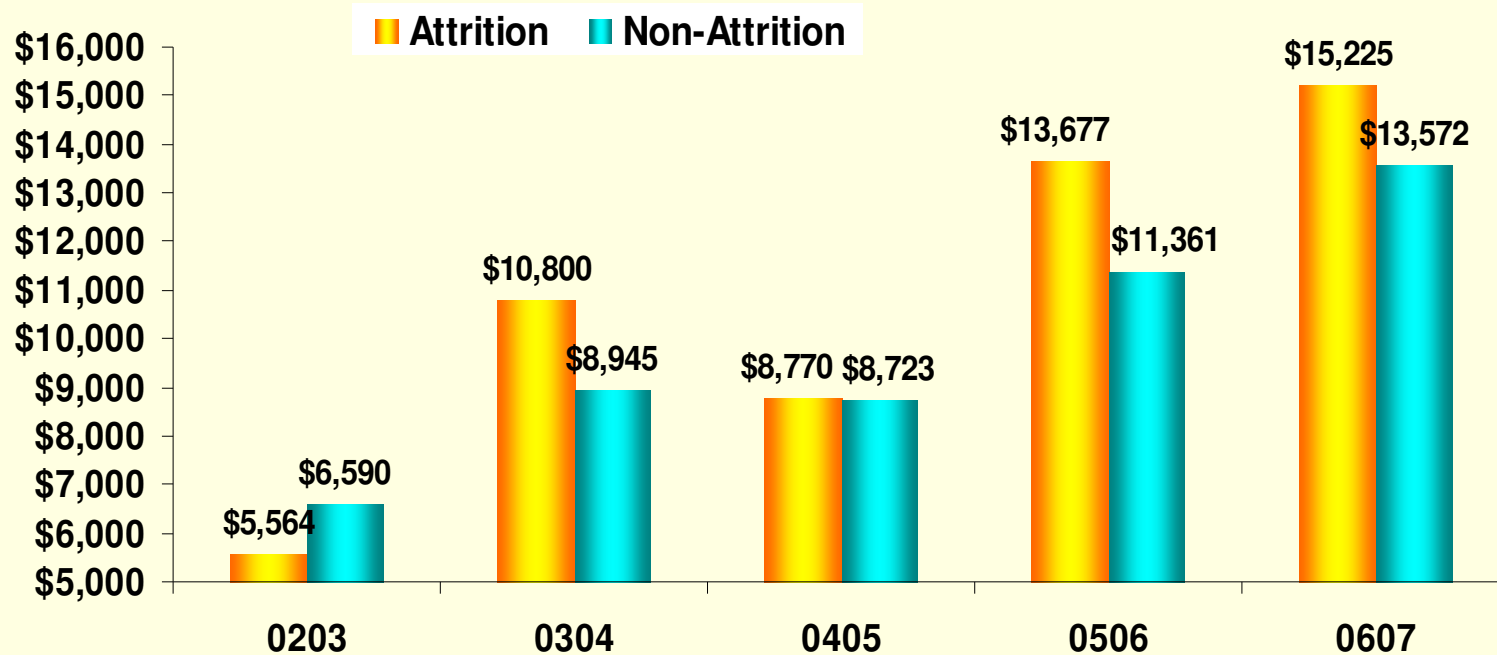
Average Need Comparison



5-Year Undergraduate Day Attrition Analysis

2002 - 2007

Average Financial Gap Comparison Excluding Need-Met excluding Plus & Private



5-Year Undergraduate Day Attrition Analysis

2002 - 2007

Average Indebtedness Comparison

(Sum of Sub/Unsub Stafford Loan and Perkins Loan)

