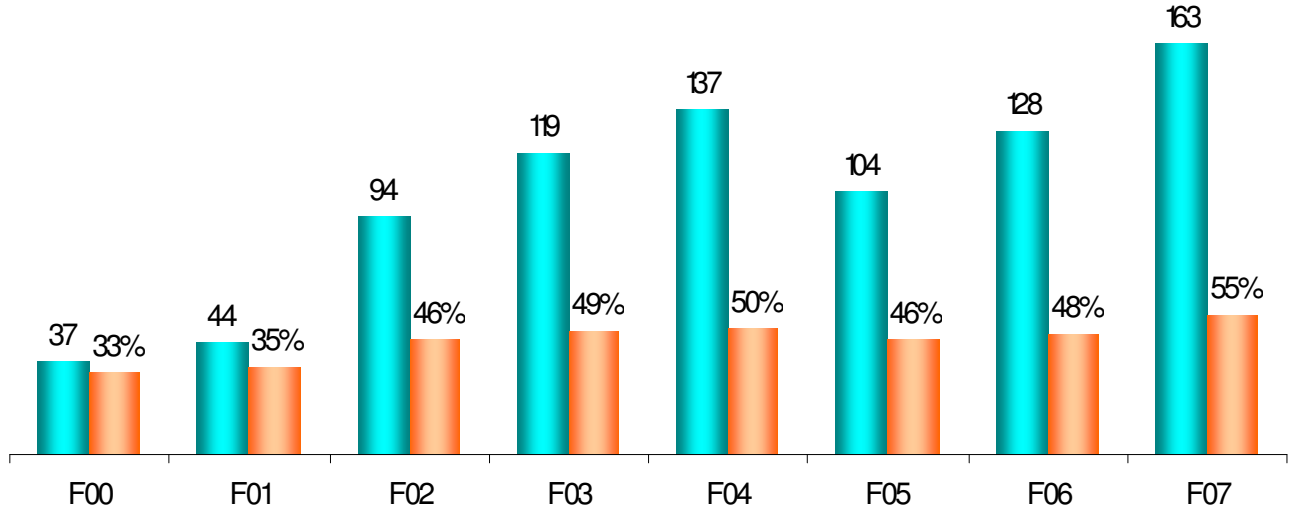


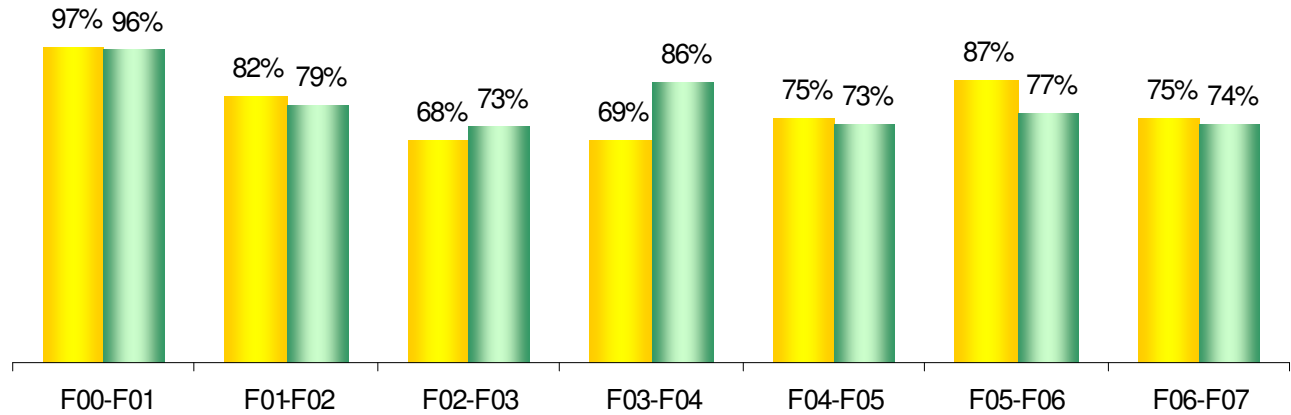
ALANA Students in Freshmen Cohort

■ ALANA # ■ ALANA %inCohort



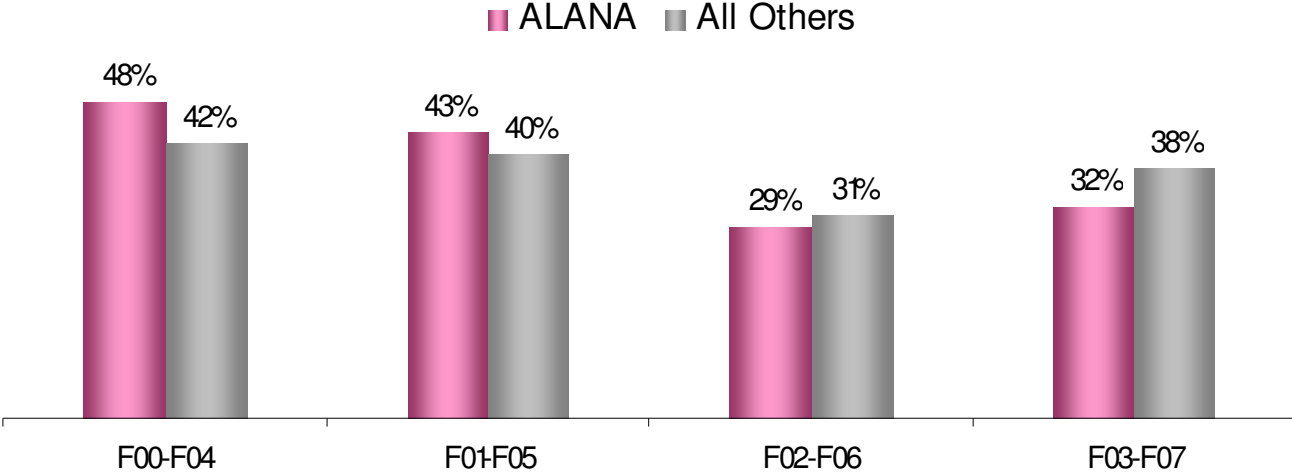
Freshmen to Second Fall Retention Rate ALANA Comparing To All Others

■ ALANA ■ All Others



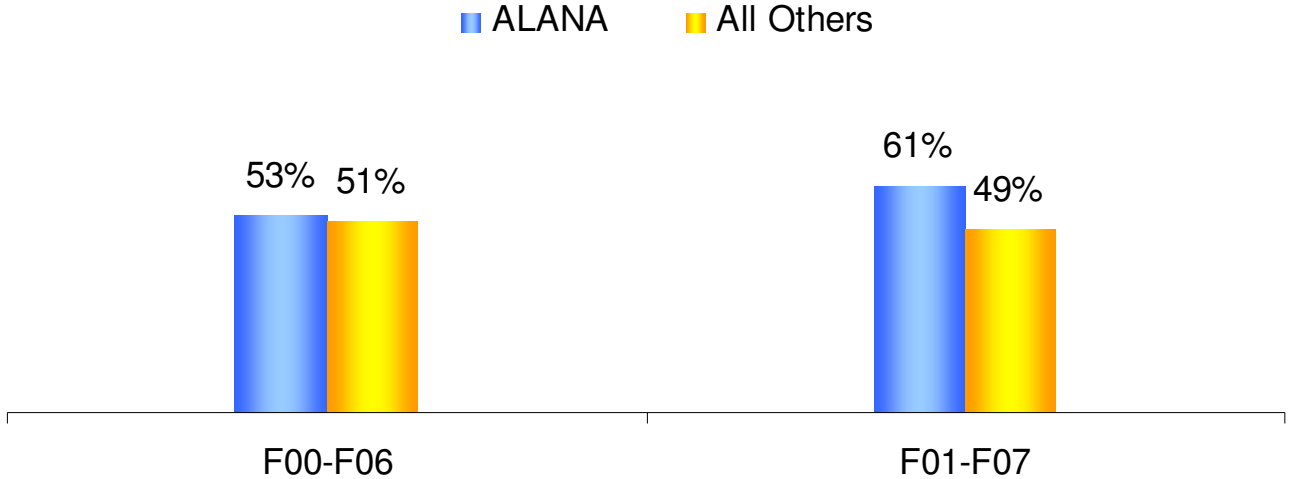
*All Others include Caucasian, Multiracial, International, and ethnicity unknown.

Four-Year Graduation Rate ALANA Comparing To All Others



*All Others include Caucasian, Multiracial, International, and ethnicity unknown.

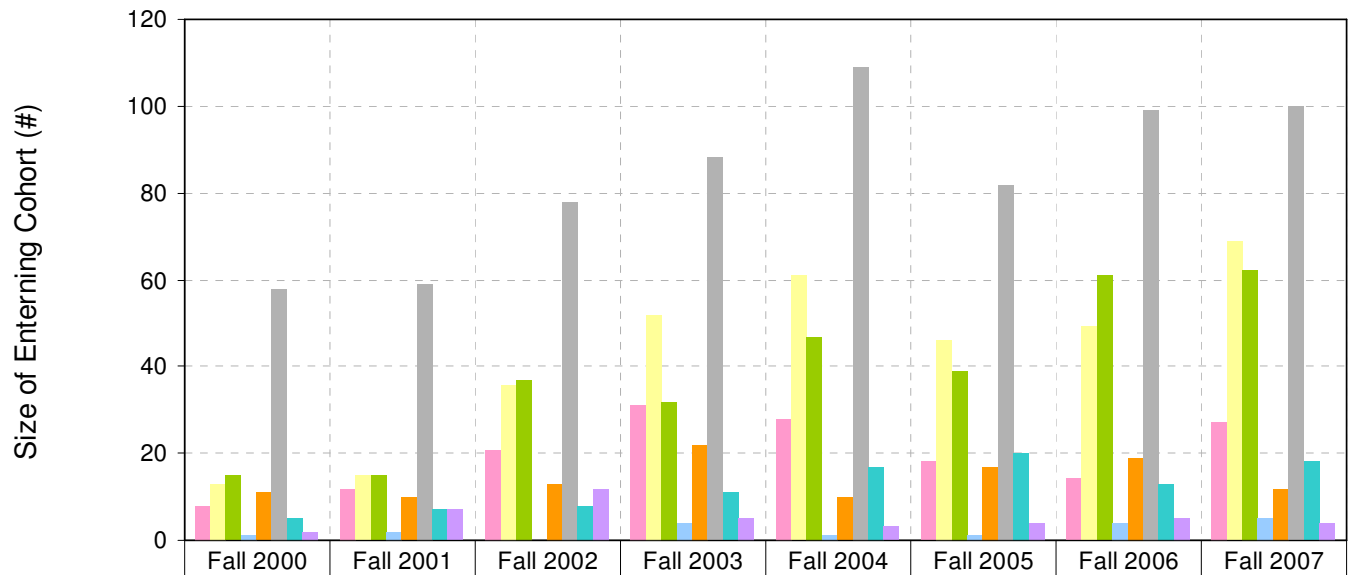
Six-Year Graduation Rate ALANA Comparing To All Others



**SUMMARY OF SECOND FALL RETENTION,
4-YEAR AND 6-YEAR GRADUATION BY ETHNICITY**

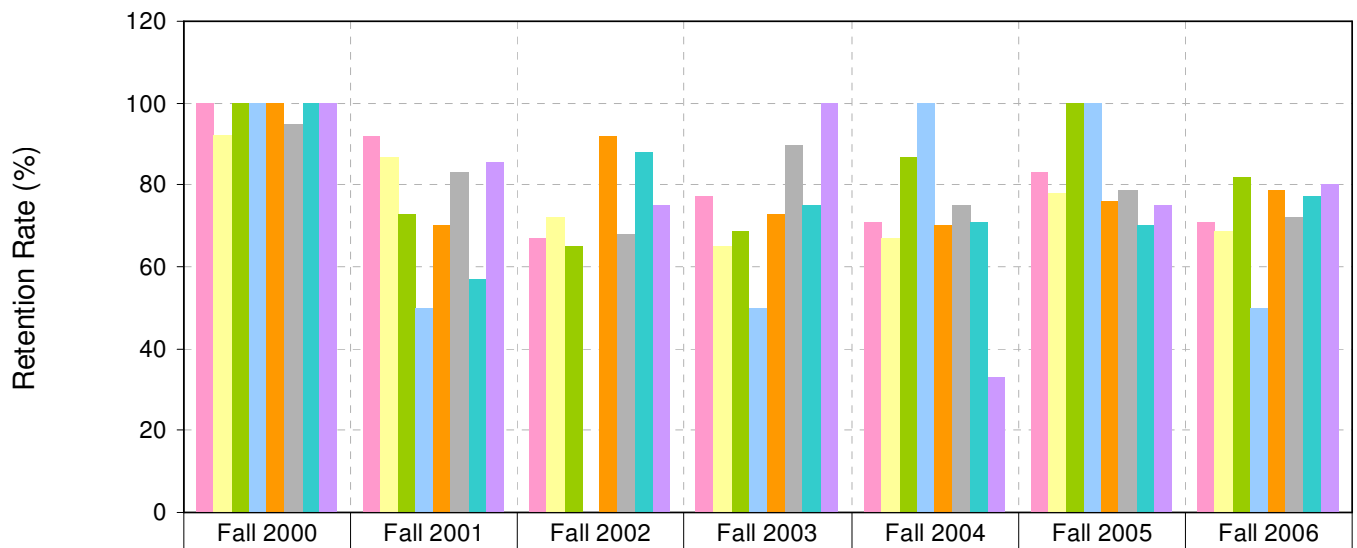
| Level | Ethnicity | Fall 2000 | Fall 2001 | Fall 2002 | Fall 2003 | Fall 2004 | Fall 2005 | Fall 2006 | Fall 2007 |
|----------------------------------|-------------------|-----------|-----------|-----------|-----------|-----------|-----------|-----------|-----------|
| Entering Cohort (#) | All | 113 | 127 | 205 | 245 | 276 | 227 | 264 | 297 |
| | African American | 8 | 12 | 21 | 31 | 28 | 18 | 14 | 27 |
| | Latino American | 13 | 15 | 36 | 52 | 61 | 46 | 49 | 69 |
| | Asian American | 15 | 15 | 37 | 32 | 47 | 39 | 61 | 62 |
| | Native American | 1 | 2 | 0 | 4 | 1 | 1 | 4 | 5 |
| | Multiracial | 11 | 10 | 13 | 22 | 10 | 17 | 19 | 12 |
| | Caucasian | 58 | 59 | 78 | 88 | 109 | 82 | 99 | 100 |
| | Ethnicity Unknown | 5 | 7 | 8 | 11 | 17 | 20 | 13 | 18 |
| | International | 2 | 7 | 12 | 5 | 3 | 4 | 5 | 4 |
| Second Fall Retention (%) | All | 96 | 80 | 70 | 77 | 74 | 88 | 74 | |
| | African American | 100 | 92 | 67 | 77 | 71 | 83 | 71 | |
| | Latino American | 92 | 87 | 72 | 65 | 67 | 78 | 69 | |
| | Asian American | 100 | 73 | 65 | 69 | 87 | 100 | 82 | |
| | Native American | 100 | 50 | n/a | 50 | 100 | 100 | 50 | |
| | Multiracial | 100 | 70 | 92 | 73 | 70 | 76 | 79 | |
| | Caucasian | 95 | 83 | 68 | 90 | 75 | 79 | 72 | |
| | Ethnicity Unknown | 100 | 57 | 88 | 75 | 71 | 70 | 77 | |
| | International | 100 | 86 | 75 | 100 | 33 | 75 | 80 | |
| 4-year Graduation (%) | All | 42 | 40 | 31 | 38 | | | | |
| | African American | 37 | 42 | 20 | 42 | | | | |
| | Latino American | 38 | 40 | 25 | 23 | | | | |
| | Asian American | 60 | 47 | 38 | 38 | | | | |
| | Native American | 100 | 50 | n/a | 25 | | | | |
| | Multiracial | 36 | 34 | 46 | 27 | | | | |
| | Caucasian | 38 | 46 | 32 | 49 | | | | |
| | Ethnicity Unknown | 40 | 0 | 13 | 27 | | | | |
| | International | 100 | 29 | 33 | 40 | | | | |
| 6-year Graduation (%) | All | 52 | 54 | | | | | | |
| | African American | 37 | 58 | | | | | | |
| | Latino American | 38 | 53 | | | | | | |
| | Asian American | 71 | 67 | | | | | | |
| | Native American | 100 | 100 | | | | | | |
| | Multiracial | 36 | 40 | | | | | | |
| | Caucasian | 50 | 56 | | | | | | |
| | Ethnicity Unknown | 80 | 14 | | | | | | |
| | International | 100 | 43 | | | | | | |

Freshmen Diversity



| | Fall 2000 | Fall 2001 | Fall 2002 | Fall 2003 | Fall 2004 | Fall 2005 | Fall 2006 | Fall 2007 |
|-------------------|-----------|-----------|-----------|-----------|-----------|-----------|-----------|-----------|
| African American | 8 | 12 | 21 | 31 | 28 | 18 | 14 | 27 |
| Latino American | 13 | 15 | 36 | 52 | 61 | 46 | 49 | 69 |
| Asian American | 15 | 15 | 37 | 32 | 47 | 39 | 61 | 62 |
| Native American | 1 | 2 | 0 | 4 | 1 | 1 | 4 | 5 |
| Multiracial | 11 | 10 | 13 | 22 | 10 | 17 | 19 | 12 |
| Caucasian | 58 | 59 | 78 | 88 | 109 | 82 | 99 | 100 |
| Ethnicity Unknown | 5 | 7 | 8 | 11 | 17 | 20 | 13 | 18 |
| International | 2 | 7 | 12 | 5 | 3 | 4 | 5 | 4 |

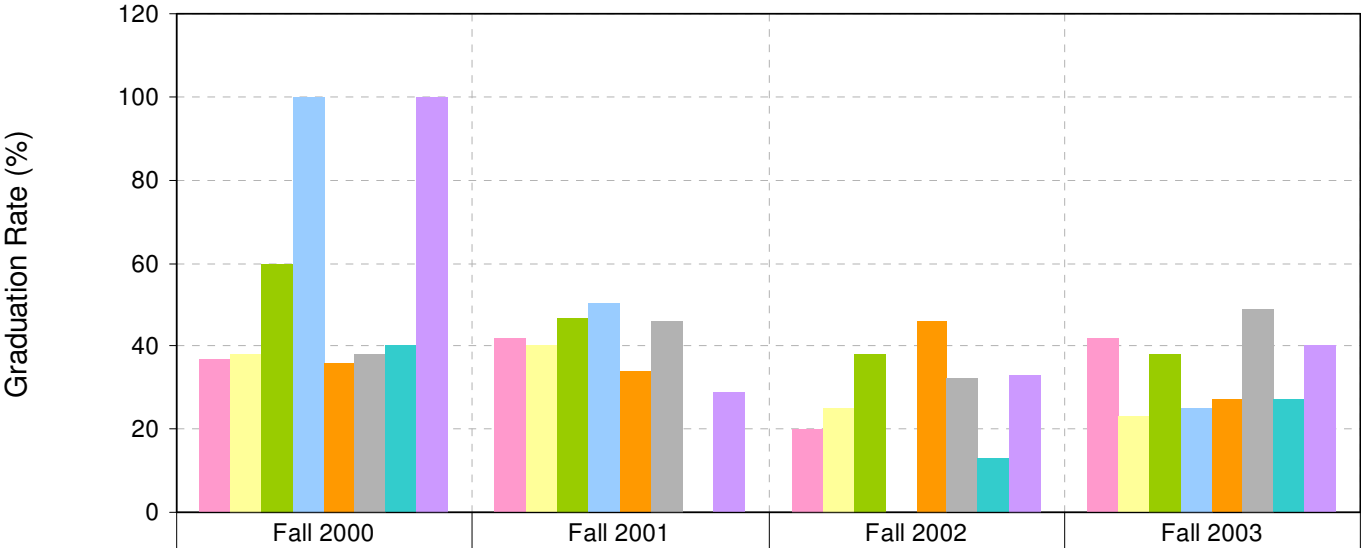
Freshman to Sophomore Retention (in %)



| | Fall 2000 | Fall 2001 | Fall 2002 | Fall 2003 | Fall 2004 | Fall 2005 | Fall 2006 |
|-------------------|-----------|-----------|-----------|-----------|-----------|-----------|-----------|
| African American | 100 | 92 | 67 | 77 | 71 | 83 | 71 |
| Latino American | 92 | 87 | 72 | 65 | 67 | 78 | 69 |
| Asian American | 100 | 73 | 65 | 69 | 87 | 100 | 82 |
| Native American | 100 | 50 | 0 | 50 | 100 | 100 | 50 |
| Multiracial | 100 | 70 | 92 | 73 | 70 | 76 | 79 |
| Caucasian | 95 | 83 | 68 | 90 | 75 | 79 | 72 |
| Ethnicity Unknown | 100 | 57 | 88 | 75 | 71 | 70 | 77 |
| International | 100 | 86 | 75 | 100 | 33 | 75 | 80 |

Year refers to cohort entering semester

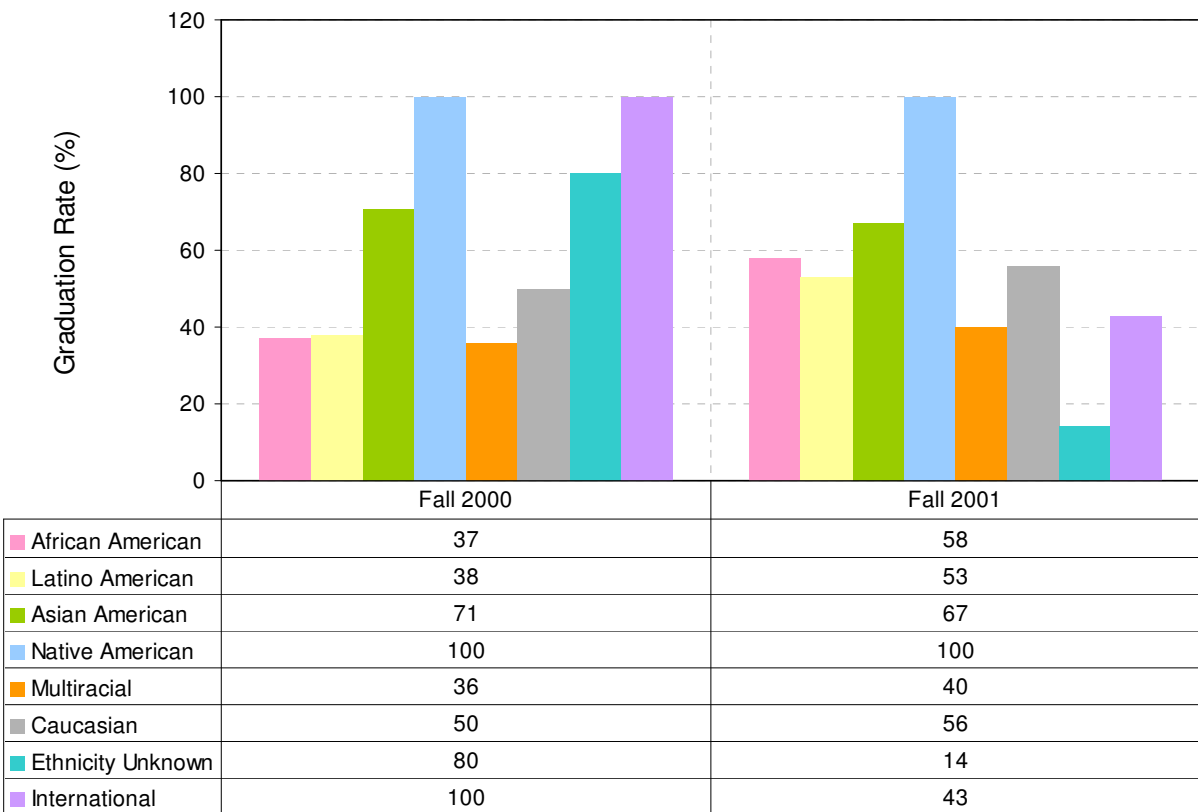
4-Year Graduation Rate (%)



| | Fall 2000 | Fall 2001 | Fall 2002 | Fall 2003 |
|-------------------|-----------|-----------|-----------|-----------|
| African American | 37 | 42 | 20 | 42 |
| Latino American | 38 | 40 | 25 | 23 |
| Asian American | 60 | 47 | 38 | 38 |
| Native American | 100 | 50 | 0 | 25 |
| Multiracial | 36 | 34 | 46 | 27 |
| Caucasian | 38 | 46 | 32 | 49 |
| Ethnicity Unknown | 40 | 0 | 13 | 27 |
| International | 100 | 29 | 33 | 40 |

Year refers to cohort entering semester

6-Year Graduation Rate (%)



Year refers to cohort entering semester